

Society
Reference
Address
Phone
Fax
E-mail

(499) 390-59-76, 8-916-188-58-08

info@electropumps.ru

1D2211B23

NKM-G 40-160/153/A/BAQE/0,55/4

(mm) : 153

MEI ≥ 0,40

PN 16

-10 °C

140 °C

40 °C

: 0,00 m3/h

: 0,00 m

(%) : 20 °C

: 0,99819 kg/dm3

1,0004 mm2/s

2,20 kPa

Real duty point

:

NPSH :

Shaft power P2 :

Efficiency :

/

250 UNI ISO 185

250 UNI ISO 185

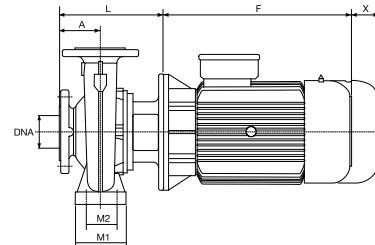
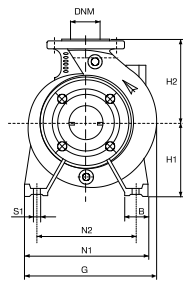
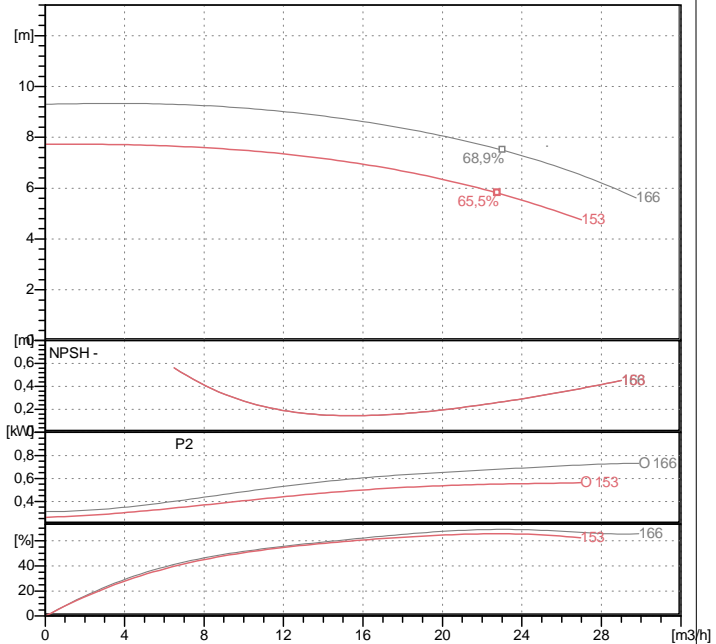
250 UNI ISO 185

SEE "SHAFT SEAL" SECTION
(EPDM)

AISI 304 X5 Cr Ni 1810 UNI 6900/71

AISI 304 X5 Cr Ni 1810 UNI 6900/71

Curve tolerance according to ISO 9906



48 kg

Type

Stationary part

Rotating part

Elastomer EPDM

2:

0,55 kW

1400 1/min

3~ 230 V / 400 V

50 Hz

2,6 / 1,5 A

IP 55

mm

A	80	H2	160	X	100
B	50	L	226		
DNA	65	M1	100		
DNM	40	M2	70		
F	234	N1	240		
G	253	N2	190		
H1	132	S1	M10		

:

DN 65 / PN 16

DN 40 / PN 16



13/01/18

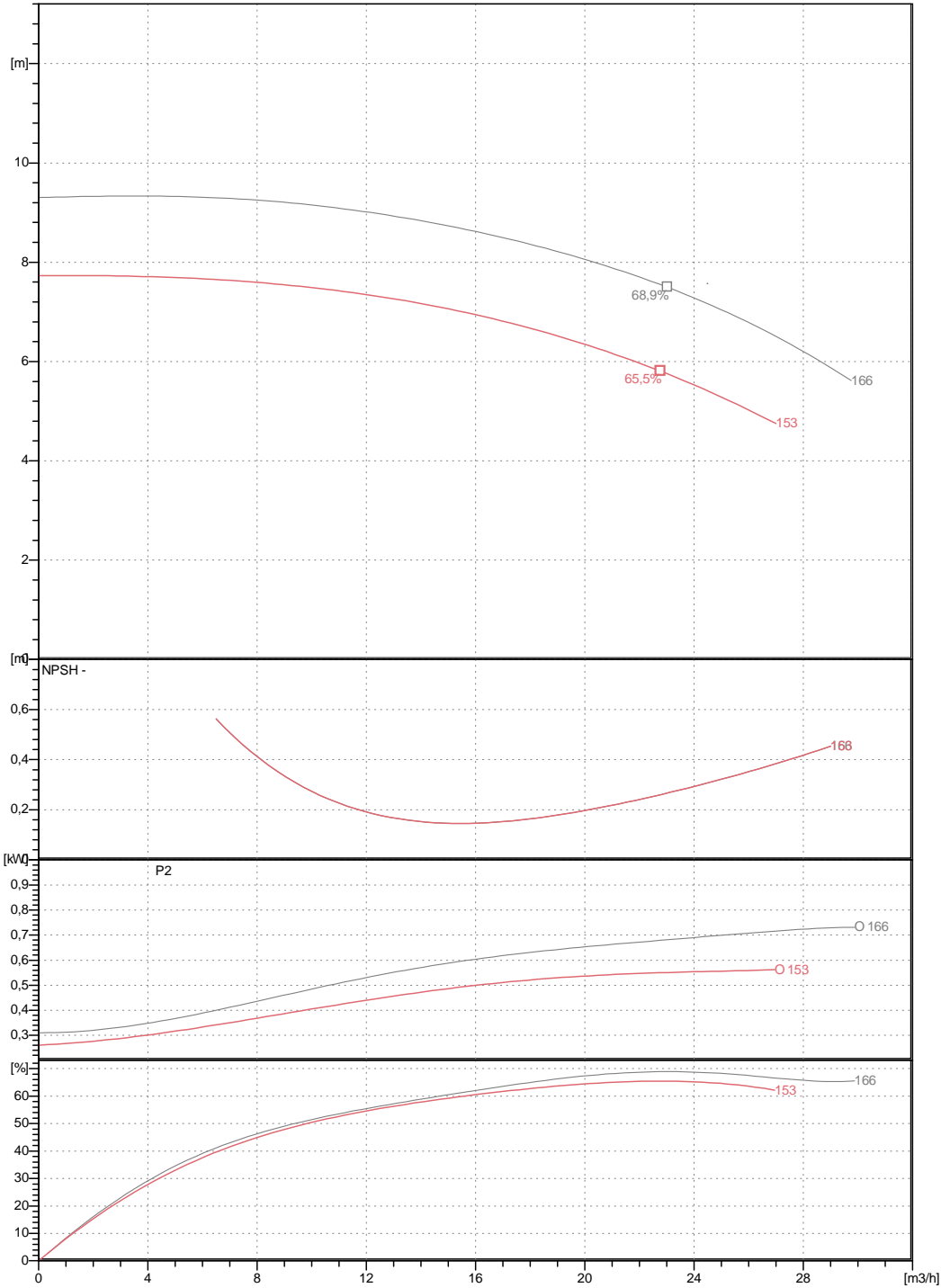
2 / 3

DAB PUMPS S.p.A.
Via Marco Polo, 14 - 35035 Mestrino (PD), Italy
Tel. +39 049 5125000 - Fax +39 049 5125950
www.dabpumps.com

Society
Reference
Address
Phone
Fax
E-mail

" "
,
(499) 390-59-76, 8-916-188-58-08
-
info@electropumps.ru

NKM-G 40-160/153/A/BAQE/0,55/4
Curve tolerance according to ISO 9906



DN 65
PN 16

DN 40
PN 16

0 m³/h

0 m

1400 1/min

13/01/18

Society
Reference
Address
Phone
Fax
E-mail

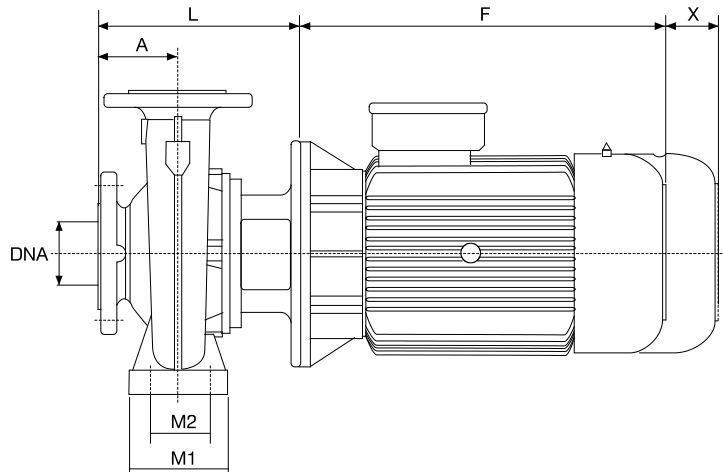
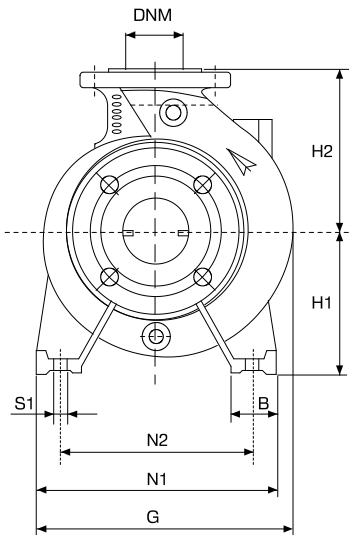
" "

(499) 390-59-76, 8-916-188-58-08

-

info@electropumps.ru

NKM-G 40-160/153/A/BAQE/0,55/4



mm

:

1	A	80	M2	70			
2	B	50	N1	240			
3	DNA	65	N2	190		DN 65	
4	DNM	40	S1	M10		PN 16	
5	F	234	X	100			
6	G	253					
7	H1	132				DN 40	
8	H2	160				PN 16	
9	L	226					
10	M1	100					